



Environment and Sustainability



The average single family uses approximately

300 gallons

of water per day.



A 300k sq. ft. data center, with an efficient water saving design uses approximately

2,000 gallons

of water per day.



An 18 hole golf course uses

1 million+ gallons

of water per day.

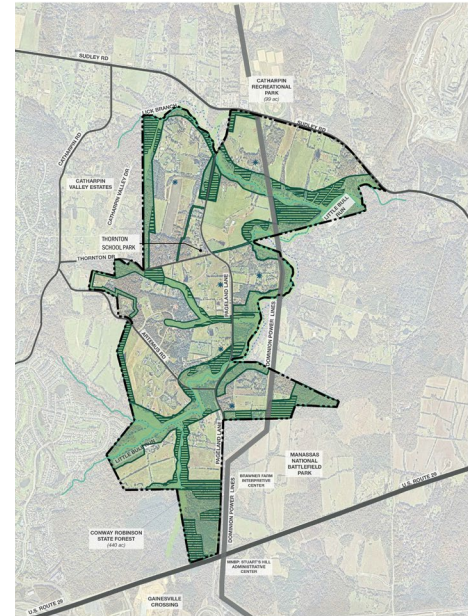


Watershed

Agricultural uses associated with the current land use designation along Pageland introduce animal waste, pesticides, and fertilizers into the streams aquifer. Agricultural uses remove hundreds of acres of tree cover.

What Impacts will Data Centers Have on the existing condition?

- State and local stormwater management regulations require improvements to existing conditions:
 - Advanced soil and erosion controls
 - A minimum of 20% reduction in post-development peak flow rates from redevelopment conditions
 - This represents a marked improvement to existing controls and mitigations
- The CPA proposes additional mitigations to protect and improve filtration and decelerate runoff by:
 - Protecting riparian corridors with expansive buffers
 - Reforestation land tracts encompassing primary and secondary streams



- Approximately 37% (~800 acres) of the 2,133 acres in the corridor have been identified for protection. Nearly double the 20% county requirement.
- Approximately 250 acres have been identified for reforestation.

Water Usage

- Data centers have shifted to implementing closed loop or air cooled designs that dramatically reduce water consumption, increase efficiency, and support environmental goals
- Neither closed loop, air cooled, nor legacy “open loop” cooling technologies draw from groundwater or contribute to runoff
- Actual water consumption associated with cooling is lower than an office building of the same size

Sustainability

- Data centers establish and track goals for water and power efficiency, waste reduction, and recycling
- Many data centers publish Environment Sustainability and Governance (ESG) reports to create public accountability
- Data centers prioritize and drive demand for renewable power
- Data centers are community partners and prioritize charitable giving, volunteerism, and community service

Sign the Petition!



whygateway.com



[/pwdigitalgateway](https://www.facebook.com/pwdigitalgateway)



[@PWdigitalgateway](https://twitter.com/PWdigitalgateway)



[@PWdigitalgateway](https://www.instagram.com/PWdigitalgateway)